

A black photo album is shown at an angle, displaying three vintage sepia-toned photographs. The top photo shows three people standing outdoors near a wooden fence. The bottom-left photo shows a woman in a long white dress and dark skirt standing next to a large wooden structure. The bottom-right photo shows a group of four people, including a man in a tuxedo, a woman, and two children, standing outdoors. The album is open, showing the black pages and the edges of many other photos.

Wagner-Bliley Family Uncaptioned Photo Album

*An Unfinished Album
by Sam Wagner*

Album 2. Wagner-Bliley Album Uncaptioned

Scanned: August 2015

Introduction

This is a very unusual album. Most of the photos in it are duplicates of ones used in other family albums created by Sam and Inez Wagner. It appears to be a work-in-progress as it lacks usual captions written by Inez.

Unfortunately, there are also a few “new” ones of which I cannot identify any of them.

The 60 pages broke away from the binding during handling. This album was in a very fragile condition and the damage could not be helped.

The upside is that I was able to easily scan all of the images in a higher resolution than has previously been done. Unfortunately, creating a cross index to these photos in other albums is a task beyond my available time or energy.

Charles A. Bliley
Rochester, NY, USA



Scanning Techniques and Practices

The album was scanned first as whole pages at 600 ppi, then a few individual photos were scanned at 600 or 1200 ppi. Almost all individual photos were scanned at high resolution. Virtually all files are in the TIFF format to retain the image's high quality.

The album numbers in this series were numbered in what originally appeared to be chronological order for convenience and quick identification.

NOTE: All images were color corrected and adjusted for maximum clarity to remove effects of aging or tinting, or to improve the contrast to bring out “hidden” details. Consequently, these scans may not represent the actual images as seen in 2015. These adjustments were done for the benefit of future viewers who may not have the tools or skills to make these adjustments.



























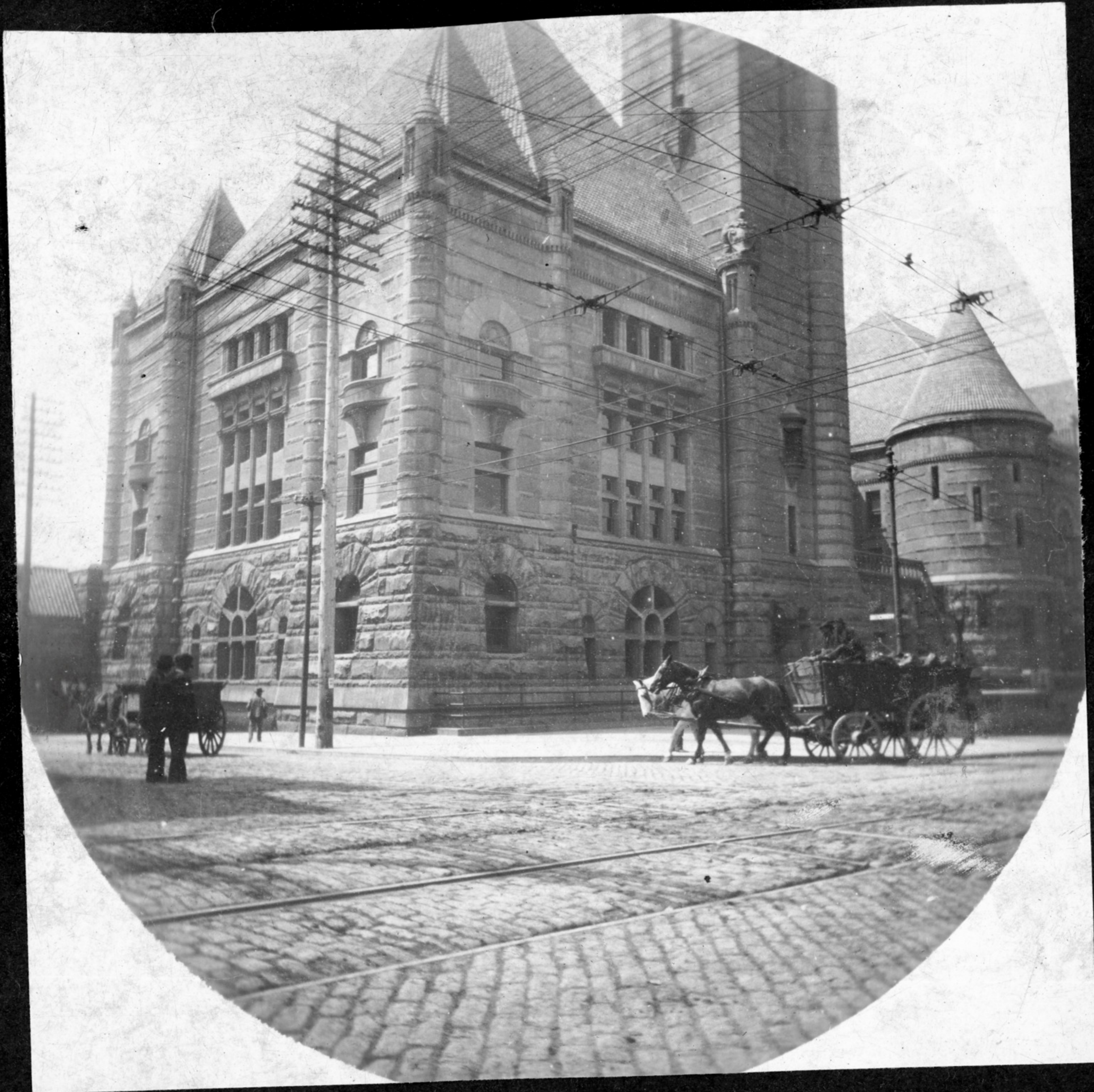


















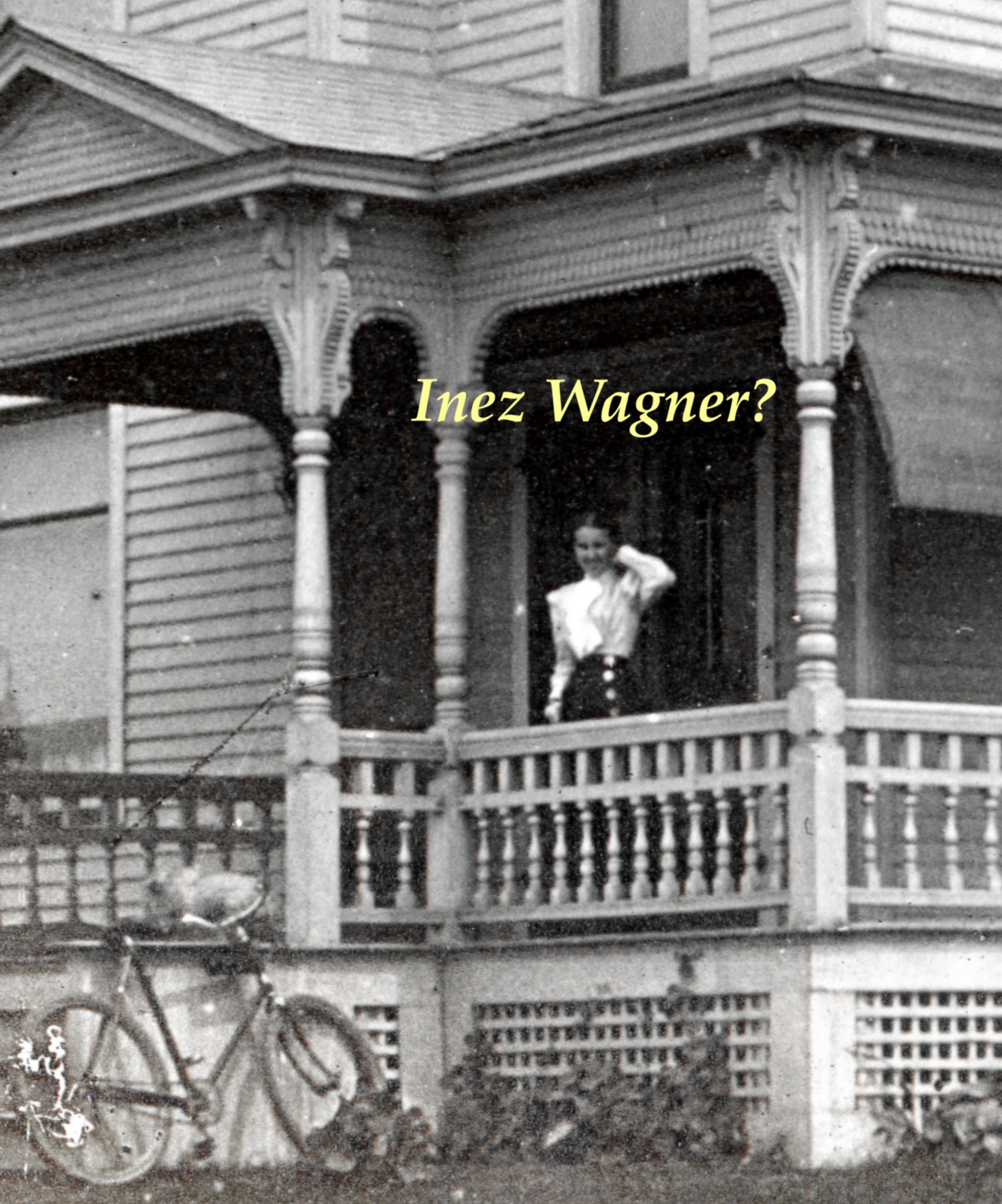








Inez Wagner?









**Mary Jane Bliley, Harborcreek, PA
Making a quilt in her dining room.
Circa: Dec. 1901/January 1902**



12 13 14 15 16 17 18
19 20 21 22 23 24 25
26 27 28 29 30 31

Calendar is for
December 1901 &
January 1902



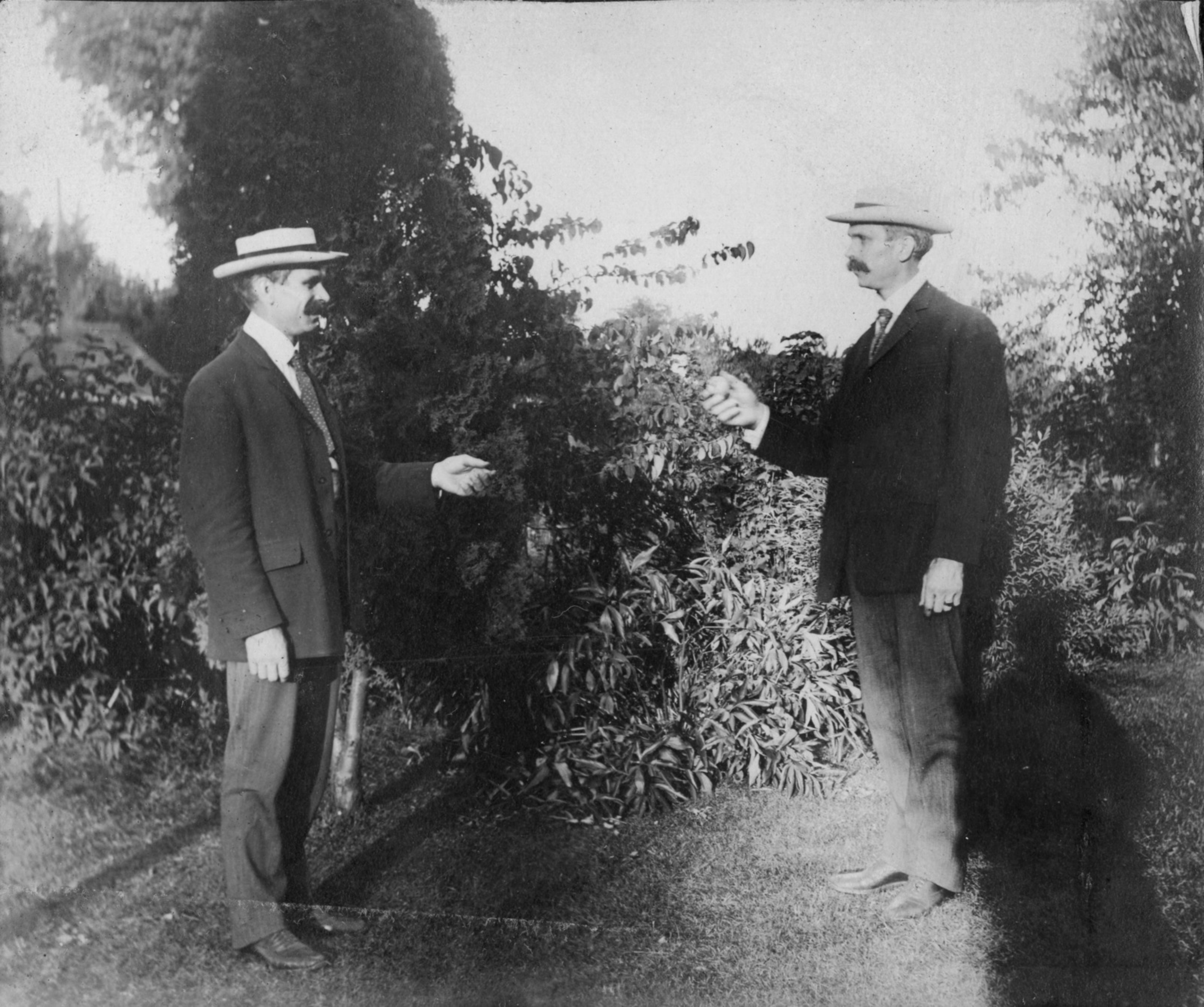














































































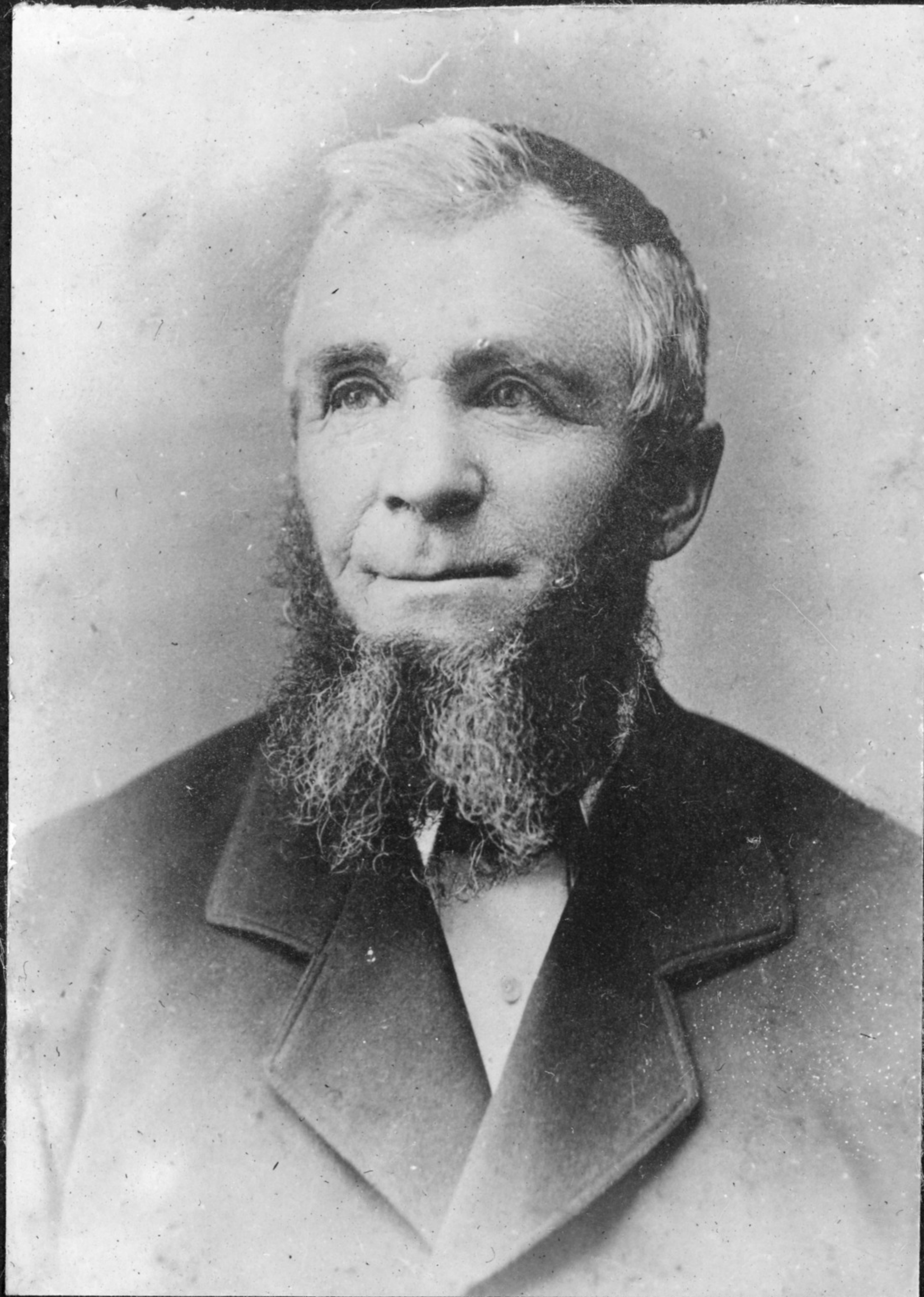




March 1866
7263





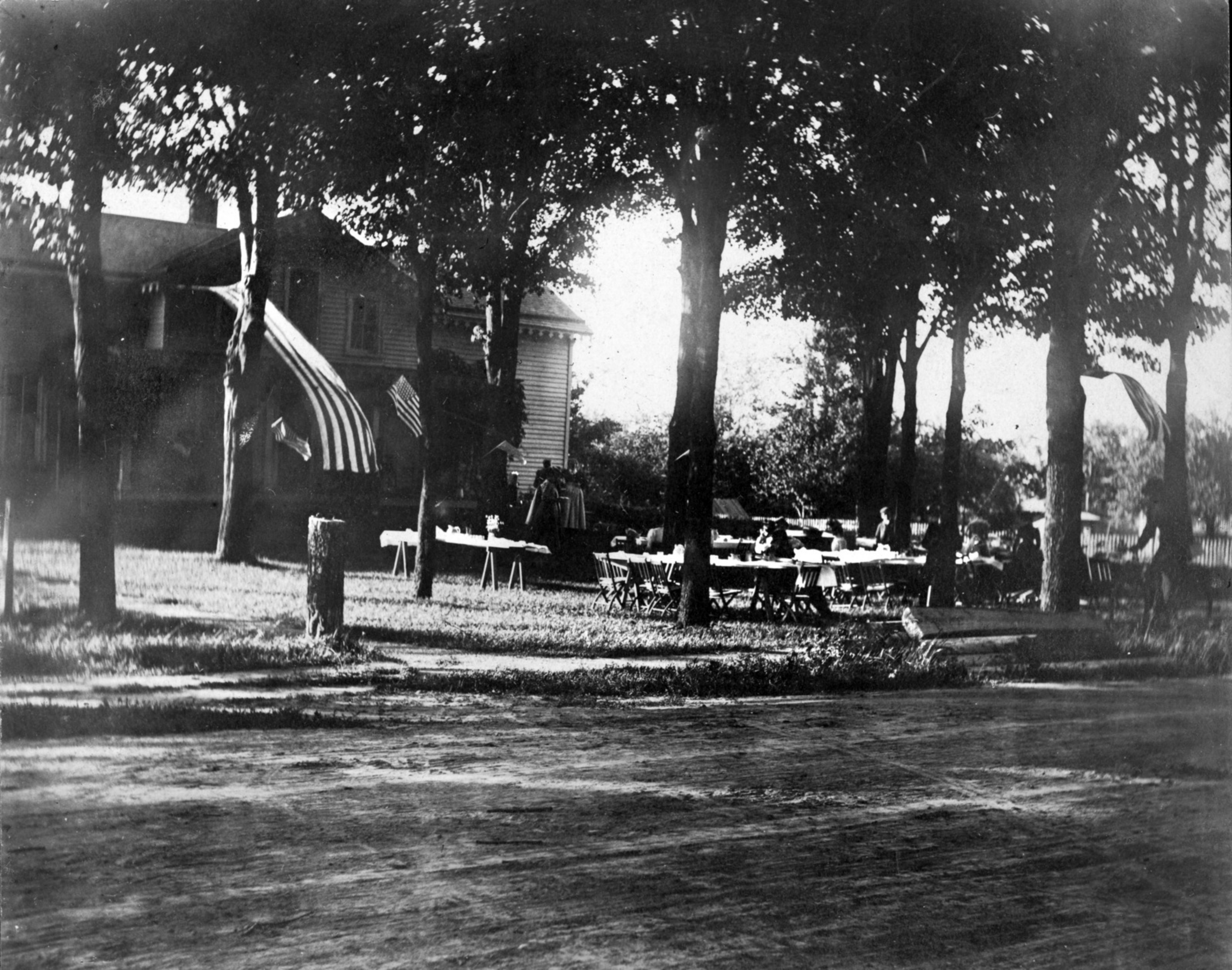
















































Donnell Building Circa 1900
Ohio Oil Company, Findlay, Ohio









































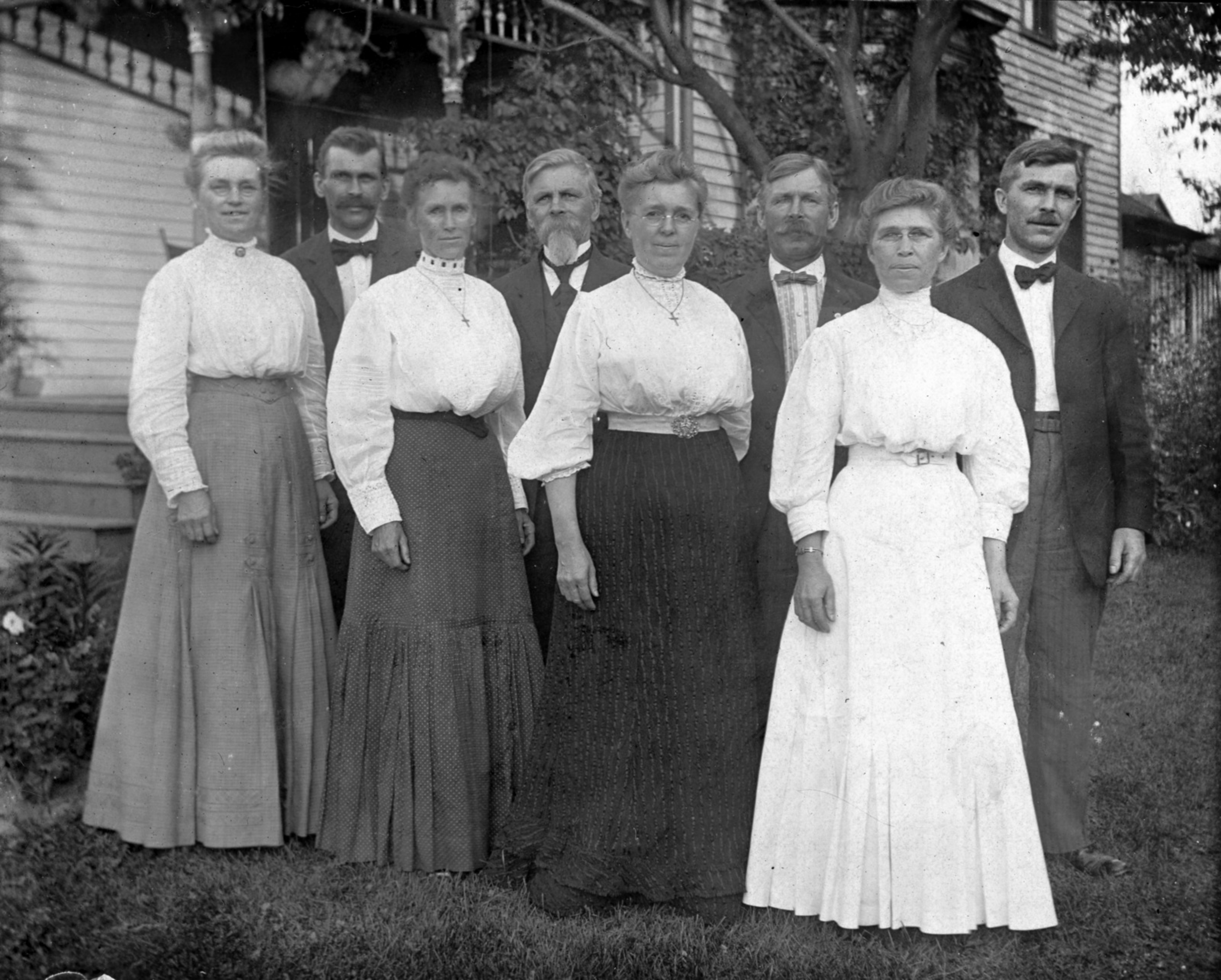
























































BLILEY FARM

Looking North on Station Road
From Gospel Hill Burial Ground
Circa 1905













BLILEY

WILLIE

1868-1888







